

Using speedlights and the ambient to create interesting portraits

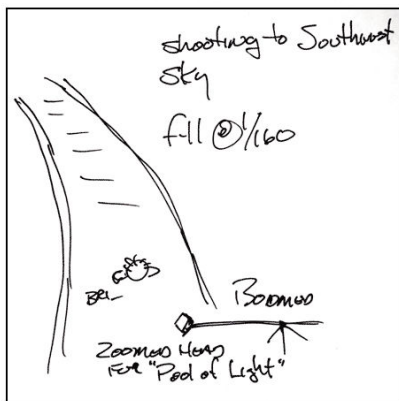
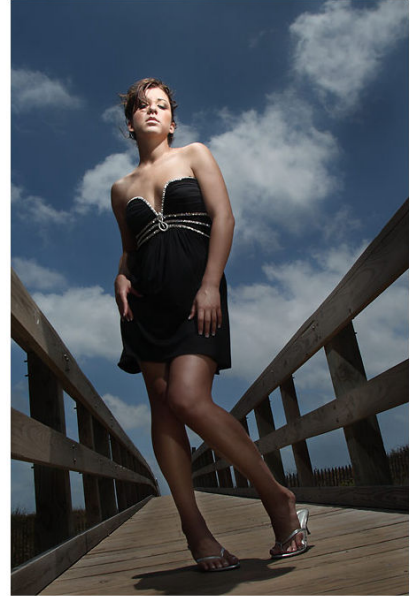
Lighting Essentials: a place for photographers

www.lighting-essentials.com



Find the ambient light and set it first. Then add your flash.

Canon
21-35MM L
at 21MM



I wanted the ambient light and the background to be dark and mysterious. Knowing that $f=11$ @ $1/160$ would do that, I simply added a strobe at a distance that would give me that exposure. Adding the zoom into the mix gave that pool of light effect that I wanted.



F-10 @ 1/100 at ISO 100

Canon 80-200L
at 200MM

Briana jumping in Halifax started with an exposure reading of the light coming across the sidewalk. F-10 @ 1/100 is enough to freeze almost all of her (feet and legs are moving too fast to freeze totally). But, notice the darkness on the face. Since it is totally in the shadow, there will be no loss of sharpness when the flash fires at an extremely fast duration.

